

Model Number:
20AC6012

OceanAire

PROVIDING A BETTER CLIMATE ANYWHERE.



COOLING



**AIR
COOLED**



5 Ton Deluxe Portable Air Conditioner

Product Features:

- Solid State Electronic Controller
- Manual or Auto 6-Speed Fan Control
- Large LED Display
- Swivel Ball Bearing Casters with Locking Fronts
- Condensate Overflow Alert
- High Pressure Safety Switch
- Washable Electrostatic Air Filters

Technical Specifications:

Specifications subject to change without notice

| | |
|--|---|
| Cooling Capacity: | 60,100 BTUH |
| Voltage: | 208-230V, 60Hz, 1PH |
| Amps: | 32 |
| Total Watts: | 6000 |
| Cooling Ambient: | Operating Range 65° to 105° |
| Outdoor Use: | No |
| Cooling Capacity: | Total BTUH at 80°DB/67°WB Return Air 95°F Outdoor at High Fan Speed. |
| In Rush Amps: | 178 |
| Plug Type: | 6-50P |
| EER: | 10.0 |
| NOTE: Dedicated circuit and time delay fuses / circuit breakers are recommended. | |

| | |
|-----------------|--------|
| Compressor: | Scroll |
| Compressor HP: | 5 |
| Compressor LRA: | 158 |

| | |
|------------------|------|
| EVAP CFM - High: | 1950 |
| EVAP Motor HP: | 1 |

| | |
|---------------|------|
| COND CFM | 2200 |
| COND MOTOR HP | 1 |

| | |
|---------------------|-------------------------------------|
| Condensate Removal: | Pump Automatic 20' Vertical Lift |
|---------------------|-------------------------------------|

| | |
|---------------------|--------------|
| Refrigerant Charge: | 80 oz R-410A |
|---------------------|--------------|

| | |
|-------------|----------|
| Height: | 54.2" |
| Width: | 28.2" |
| Depth: | 41.0" |
| Net Weight: | 485 lbs. |

847.583.0311
oceanaire-inc.com

PROUDLY MADE IN THE
USA



PROVIDING A BETTER CLIMATE ANYWHERE.

Optional Accessories



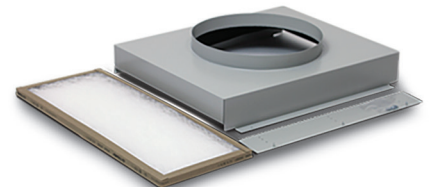
Ceiling Panel Kit

For discharging the condenser air above a drop ceiling
Part Number: CK-16



Nozzle Kit / 2 x 8"

For directional cooling
Part Number: 2NK-3



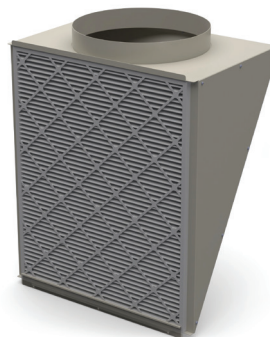
Evaporator Return Air Plenum

For ducting return air
Part Number: DEP-16



Discharge Duct Adapter

For extended duct length
Part Number: 2DDA-16



Condenser Return Air Plenum

For installations where it is required to duct air to the inlet of the condenser.
Part Number: DCP-5



PROVIDING A BETTER CLIMATE ANYWHERE.

OceanAire, Inc.
1731 Wall Street, Suite 100
Mount Prospect, Illinois 60056

OA-TS-2OAC6012-06.13.22