

# AHSC-14P

## PORTABLE HEAT PUMP

### Cooling and heating in one system!

AIRREX has designed portable heat pumps that can be utilized all year round applications.

AIRREX portable heat pump has the ability to be switched from cooling to heating mode.

In cooling mode a heat pump works the same as an ordinary air conditioner (A/C).

In heating mode the unit absorbs the heat from the refrigeration cycle and converts it into warm air (heater).

1 year warranty and 3 years on compressor.

#### Strong Points



Quiet



Thermostats



Intensive Air Conditioning



Movable & Lockable



Energy saving



Automatic



Time Setting

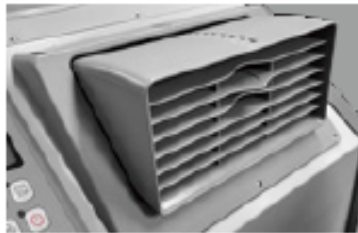


Certification



Portable Heat pump System

Cooling and heating in one system!



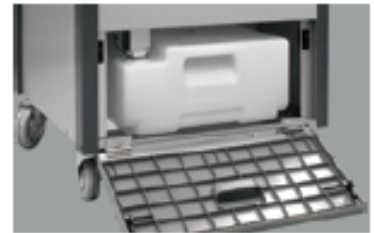
Louver type

You can change wind direction up, down, right, or left.



Mobility

(4) 4" Swivel Casters  
(2) Locking Casters



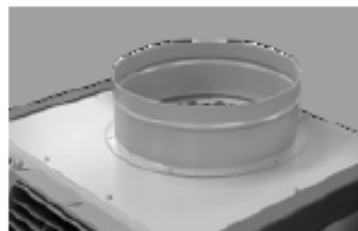
Condensate Tank

5 Gallon Tank Auto Shut off



4-Way Reversing Valve

Core valve for hot and cool operating system



Applications

Indoor or Outdoor  
Cooling Drying



LCDI Protection

LCDI Recessed Power Cords  
Standard 115 Volt Power  
ETL Certified



Digital Controls

Temperature Range: Cool: 61°F to 86°F  
Heat: 68°F to 99°F  
High/Low Fan Speed, Programmable / Timer  
Easy Cool and Heat changeable